

Einbauanleitung

von www.adrik.de zur Verfügung gestellt

**E-X-EI30 Brandschutztür XinniX
wandbündig
mit unsichtbarer Zarge**

SERIES X2-EI UNIVERSAL KIT

X240 - 50 mm
X245 - 55 mm
X250 - 60 mm

EU RECHTS | DROIT | RIGHT

EU LINKS | GAUCHE | LEFT



Trekken EU rechts
Tirant EU droit
Pull EU right
Ziehen DIN Rechts



Duwen EU rechts
Poussant EU droit
Push EU right
Drücken DIN Rechts



Trekken EU links
Tirant EU gauche
Pull EU left
Ziehen DIN Links



Duwen EU links
Poussant EU gauche
Push EU left
Drücken DIN Links

= Re ZIEHEN

= Li Drücken

= Li ZIEHEN

= Re DRÜCKEN

***** Lt. Definition ADRIK wandbündige E-Serie Türen *****

DEURFRAME | CADRE DE PORTE | DOOR FRAME | UNIVERSALZARGE

1 Staanders⁽¹⁾ + laag grafiet⁽¹⁰⁾ + bevestigingsprofielen^(5,6,7)

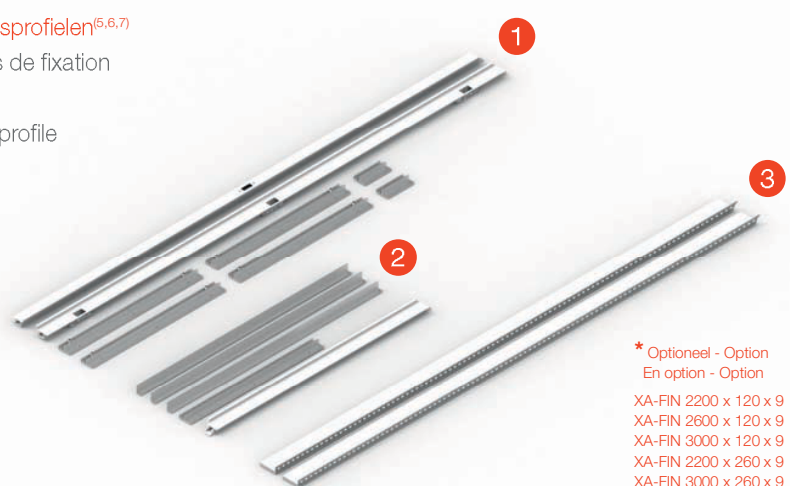
Montants + couche de graphite + profilés de fixation
Uprights + layer graphite + fixing profiles
Ständer + Graphitschicht + Befestigungsprofile

2 Kopstuk⁽²⁾ + afstandhouders⁽⁸⁾

Traverse + entretoises
Upper rail + spacers
Querleiste + Abstandhalter

3 Afwerkingsprofiel XA-FIN *

Profil de finition *
Finition profile *
Fertigungsprofil *



* Optioneel - Option
En option - Option
XA-FIN 2200 x 120 x 9
XA-FIN 2600 x 120 x 9
XA-FIN 3000 x 120 x 9
XA-FIN 2200 x 260 x 9
XA-FIN 3000 x 260 x 9

XINNIX SELECTION DEURBESLAG | QUINCAILLERIE | HARDWARE | BESCHLÄGE



+ Fire rated interdens around the hinge

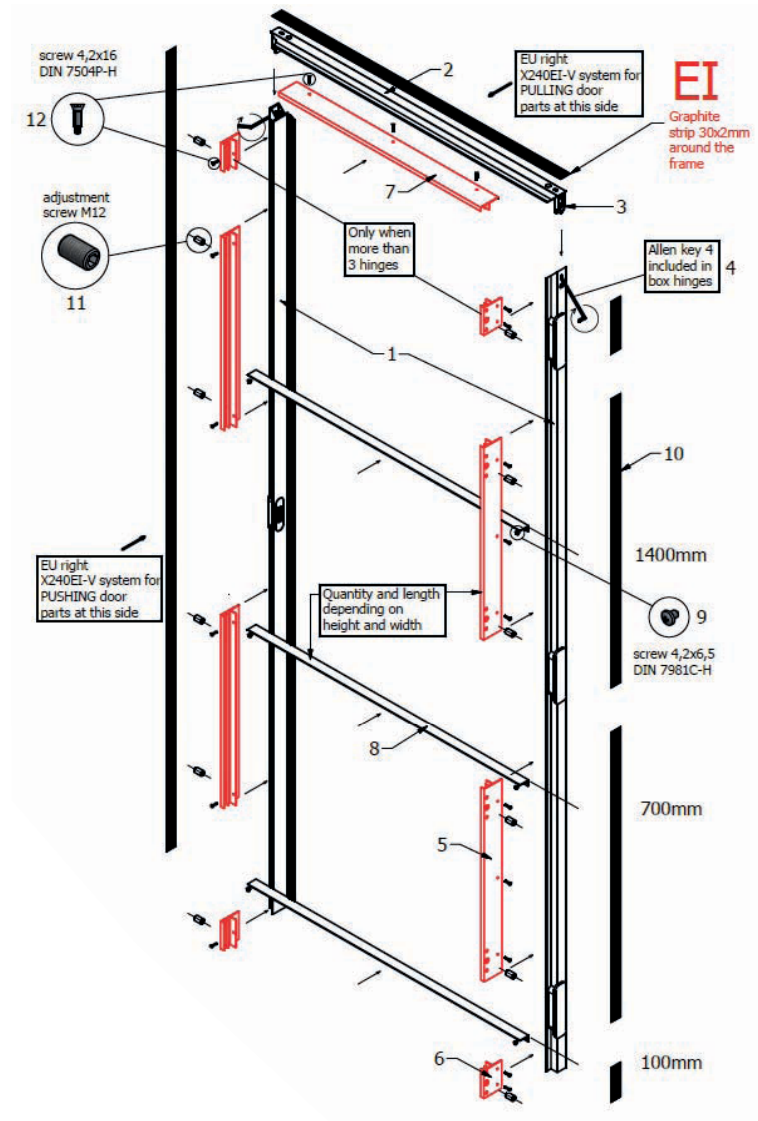


+ Fire rated interdens around the lock



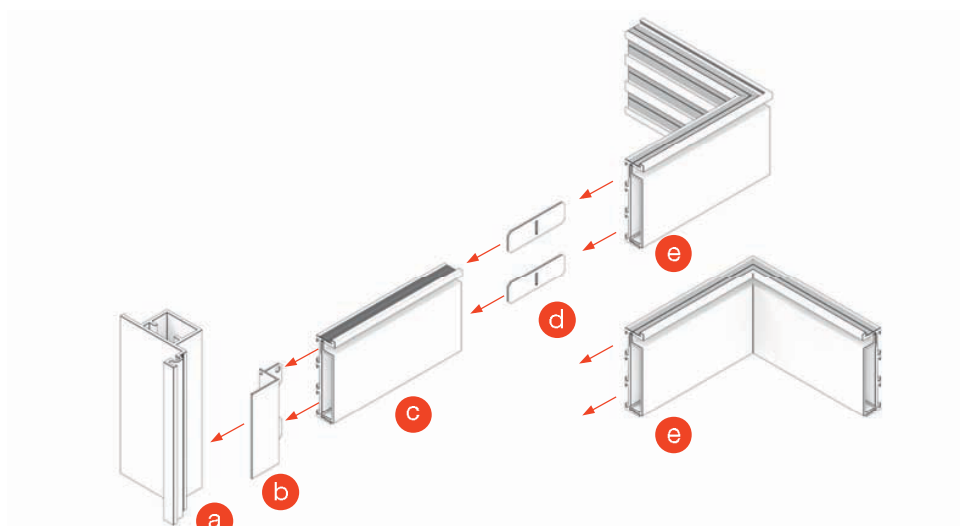
Fire rated gasket

SERIES X2-EI UNIVERSAL KIT



XP50 © UNIVERSAL INTEGRATED XINNIX PLINTH

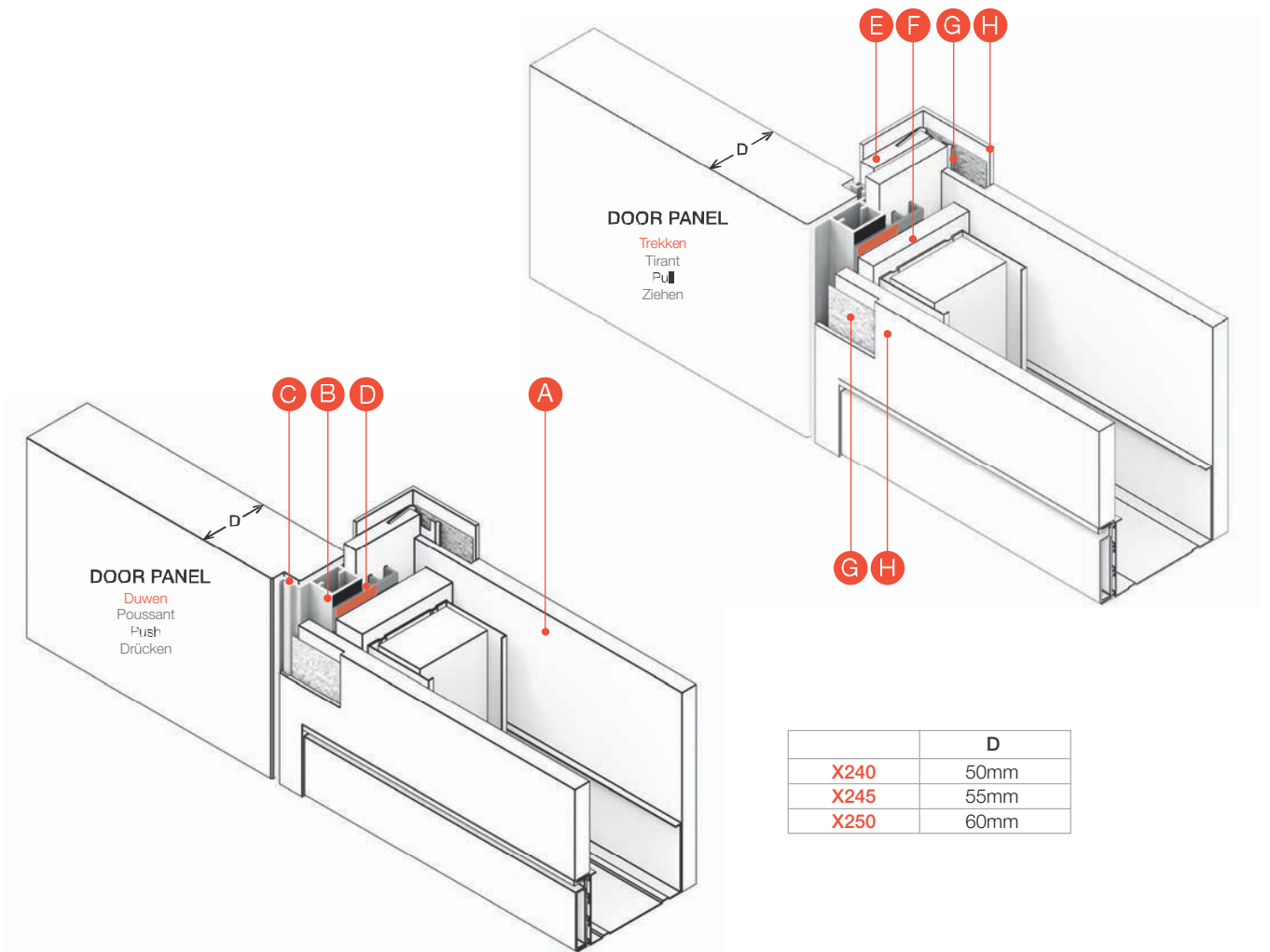
- a** X2
- b** XP50-C002
- c** XP50 + XP50-Cover
- d** XP50-C001
- e** XP50-A045 (+45° / -45°)



Montage in GKW Gipskartonwände

SERIES X2-EI UNIVERSAL KIT

METAL STUD INSTALLATION



A Metal Stud + gipsplaat

Métal Stud + carton-plâtre
Metal Stud + plasterboard
Ständerwerk + Beplankung

B Xinnix profiel X2-EI + grafiet laag

Profilé Xinnix X2-EI + couche de graphite
Xinnix profile X2-EI + graphite layer
Xinnix Universalzarge X2-EI + Graphitschicht

C Brandwerende dichting

Joint coupe-feu
Fire rated Gasket
Dichtungen Feuerschutz

D FUL profiel met stelschroeven

Profil de montage FUL avec des vis de fixation
Fixing profile FUL with adjustment screws
Montageprofiel FUL mit Stellschrauben

E Afwerkingsprofiel XA-FIN (optioneel)

Profilé de finition XA-FIN (option)
Finishing profile XA-FIN (optional)
Fertigungsprofil Gipskarton mit Verputzecke XA-FIN (optional)

F Brandwerend PU schuim

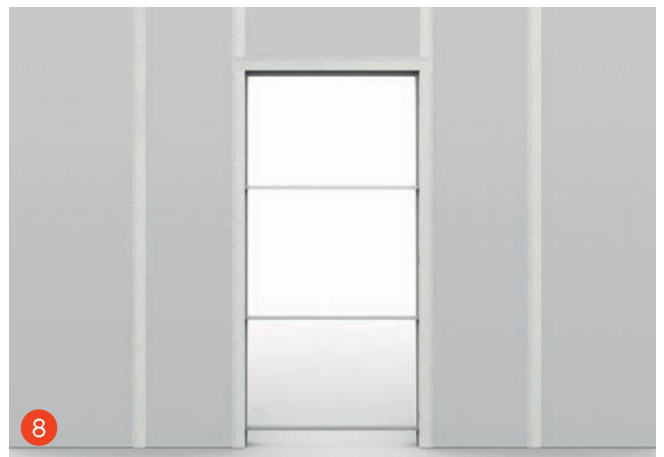
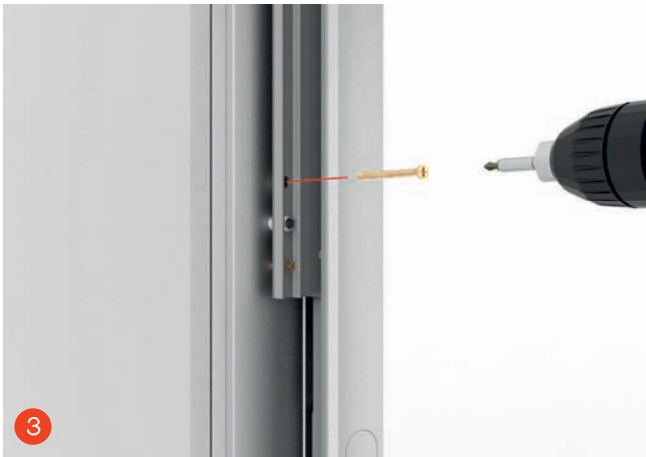
Mousse PU coupe-feu
Fire rated PU-foam
Feuerschutz Pu Schaum

G Papierband P50 (niet meegeleverd)

Bande de papier P50 (non inclus)
Paper tape P50 (not included)
Papierband P50 (nicht enthalten)

H Opvullag - Jointfiller Vario, ProMix Premium of gelijkaardig

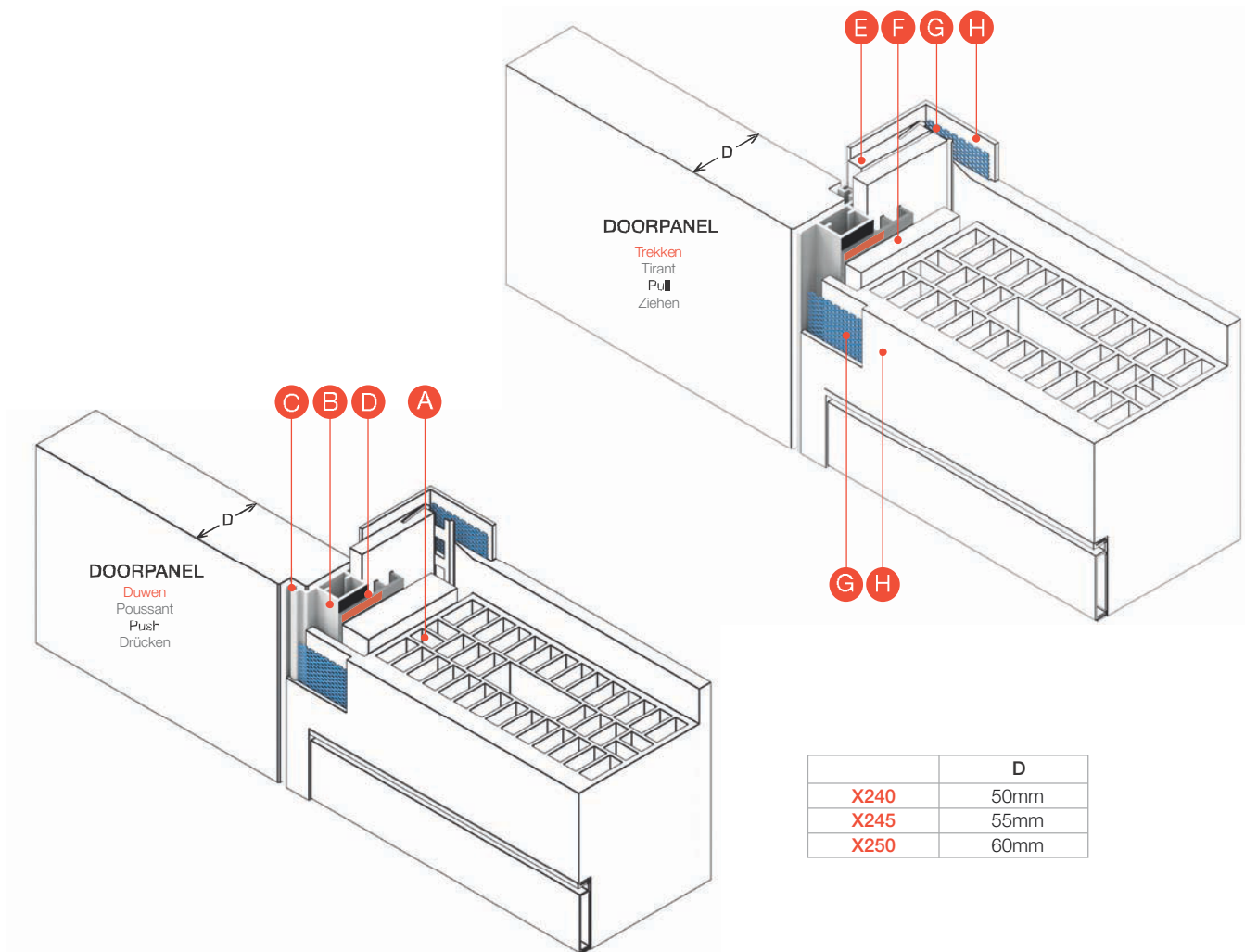
Couche de finition - Jointfiller Vario, ProMix Medium ou similaire
Finishing layer - Jointfiller Vario, ProMix Medium or equivalent
Verspachtelung - Rigips Vario, Knauf Uniflott oder gleichwertig



Montage in MW Mauerwerkswände mit Verputz

SERIES X2-EI UNIVERSAL KIT

BRICK WALL INSTALLATION



A Gemetste muur + bepleistering

Mur maçonnerie + plafonnage
Brick wall + plastering
Mauerwerk + Verputzung

B Xinnix profiel X2-EI + grafiet laag

Profilé Xinnix X2-EI + couche de graphite
Xinnix profile X2-EI + graphite layer
Xinnix Universalzarge X2-EI + Graphitschicht

C Brandwerende dichting

Joint coupe-feu
Fire rated Gasket
Dichtungen Feuerschutz

D FUL profiel met stelschroeven

Profil de montage FUL avec des vis de fixation
Fixing profile FUL with adjustment screws
Montageprofiel FUL mit Stellschrauben

E Afwerkingsprofiel XA-FIN (optioneel)

Profilé de finition XA-FIN (option)
Finishing profile XA-FIN (optional)
Fertigungsprofil Gipskarton mit Verputzecke XA-FIN (optional)

F Brandwerend PU schuim

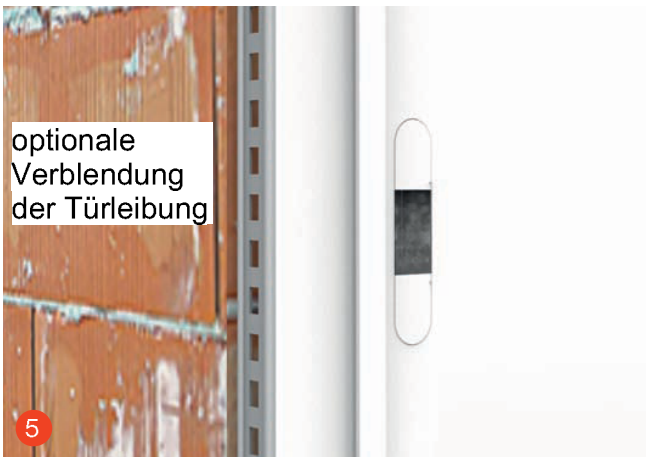
Mousse PU coupe-feu
Fire rated PU-foam
Feuerschutz Pu Schaum

G Glasvezel Gitex (niet meegeleverd)

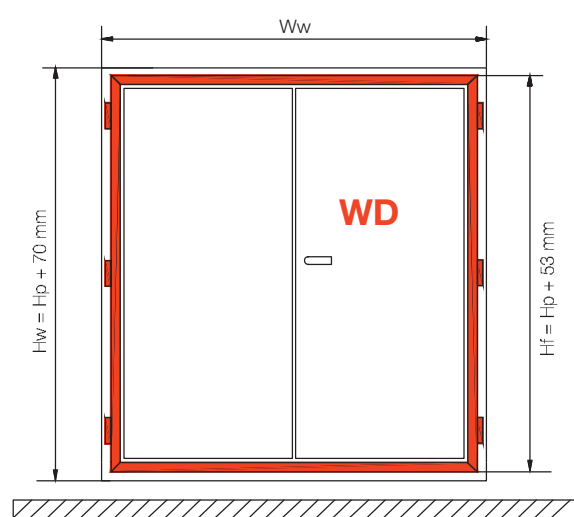
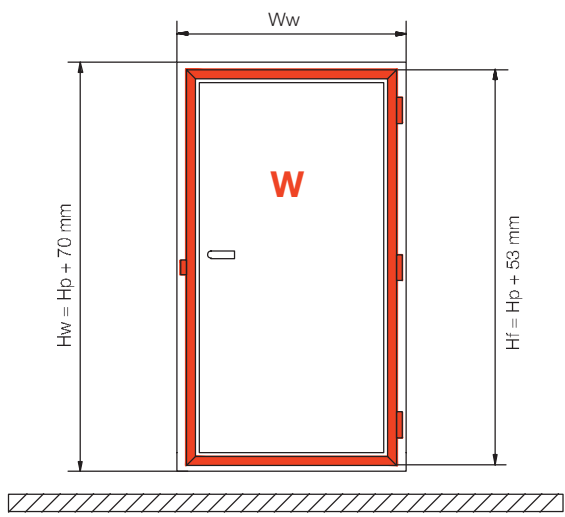
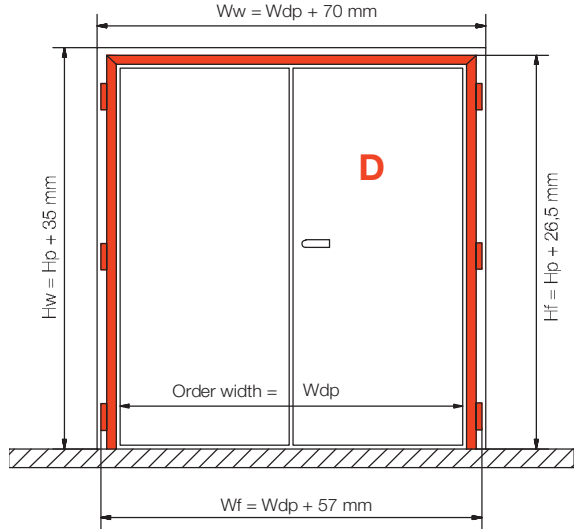
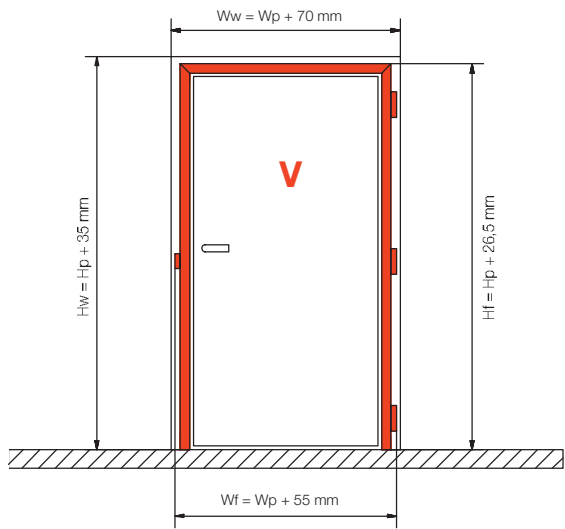
Fibre de verre Gitex (non inclus)
Fiberglass Gitex (not included)
Abdichtungsband Gewebe (nicht enthalten)

H Opvullaag - Jointfiller Vario, ProMix Premium of gelijkaardig

Couche de finition - Jointfiller Vario, ProMix Medium ou similaire
Finishing layer - Jointfiller Vario, ProMix Medium or equivalent
Verspachtelung - Rigips Vario, Knauf Uniflott oder gleichwertig



X2 MEASUREMENTS



HP = Height doorpanel (max 3000mm)
 WP = Width doorpanel

Hf = Height doorframe
 WF = Width doorframe

Hw = Opening height wall
 Ww = Opening width wall

X2 ACCESSORIES

Magnetfallenschloß PZ 8mm Vierkant



XA-D70BB.CS	☐
XA-D73WC.CS	☑
XA-D78PZ.CS	☐



DIN KfV

XA-KFV116F	
XA-KFV116BB	☐
XA-KFV116WC	☑
XA-KFV116PZ	☐



DIN

XA-R15*.55XINBB.TH	☐
XA-R17*.55XINWC.TH	☑
XA-R19*.55XINPZ.TH	☐
XA-R35*.55XINBB.TH	☐
XA-R37*.55XINWC.TH	☑
XA-R95*.55XINPZ.TH	☐



MULTIPOINT LOCK SECURITY

XA-SEC-LOCK

Mehrfachschlösser optional

ELECTRICAL COUNTERSTRIKE



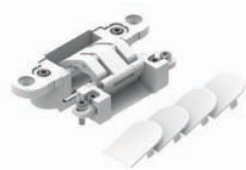
XA-EL118-KFV/L XA-EL118-XIN
XA-EL118-KFV/R XA-EL118-KFVF

Elektrische Öffner optional

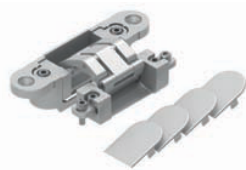
OVERHEAD DOOR CLOSER



GEZE BOXER
XA-EI-BOXER2-4



XA-A24.0
WIT | BLANC | WHITE | WEISS



XA-A24.1
ALU F1



XA-A24.2
ZWART | NOIR | BLACK | SCHWARZ



XA-A300
WIT | BLANC | WHITE | WEISS



XA-TE
340F1
ALU F1

Bei ADRIK bestellte E-X-EI30 XinniX Brandschutztüren werden iAR standardmäßig mit TECTUS Bänder ausgestattet !